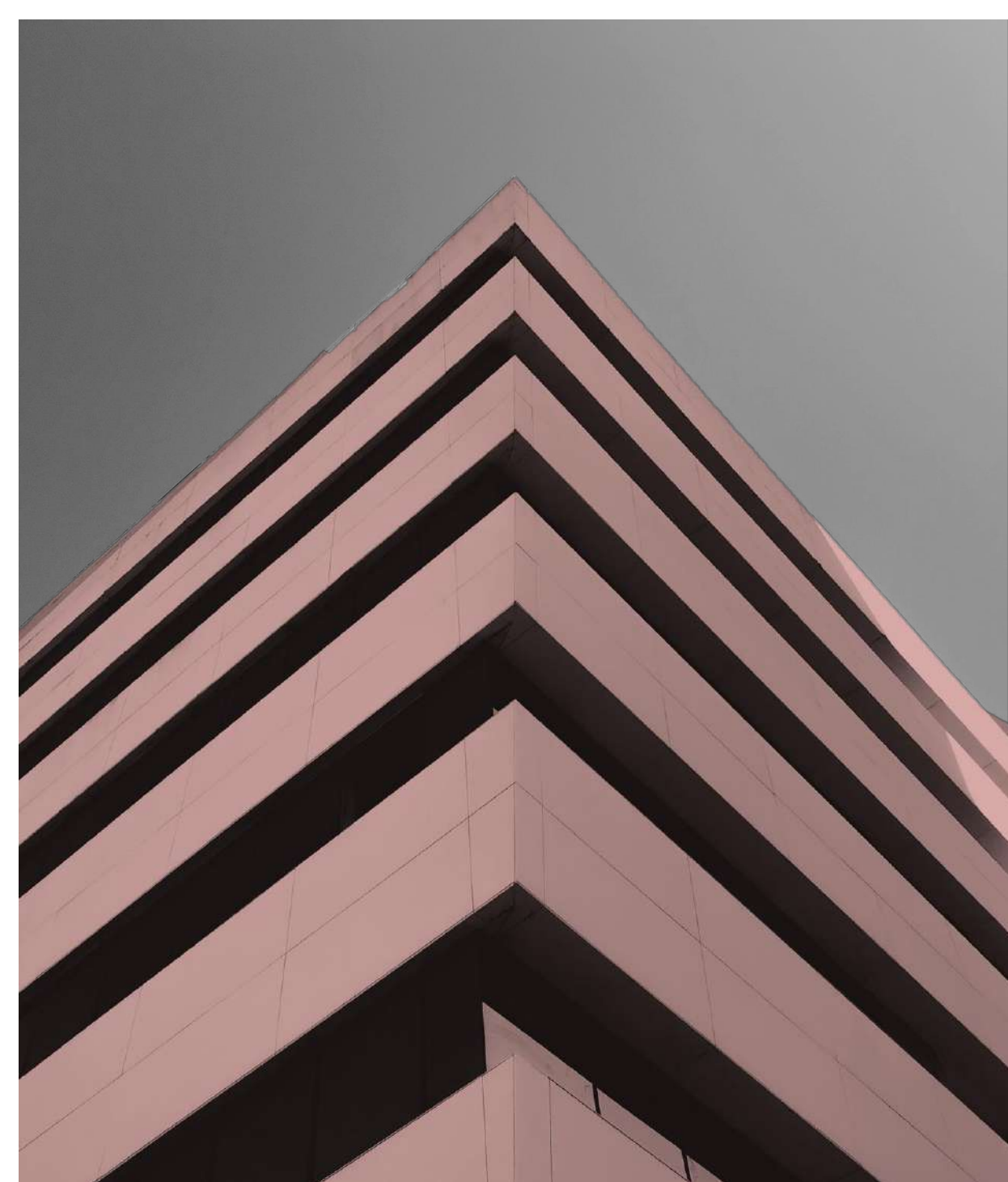




Silverglades

The Address Makers



35+

GLORIOUS YEARS
OF CREATING ADDRESSES

Founded in 1988, we are India's premier boutique developer, renowned for crafting luxury addresses and iconic landmarks throughout Delhi NCR.



To build best-in-class real estate developments
which stand for innovation, timeless design and
create value for our clients.

RERA Registration No. 88 of 2024
<https://haryanarera.gov.in/>

P R E S E N T I N G

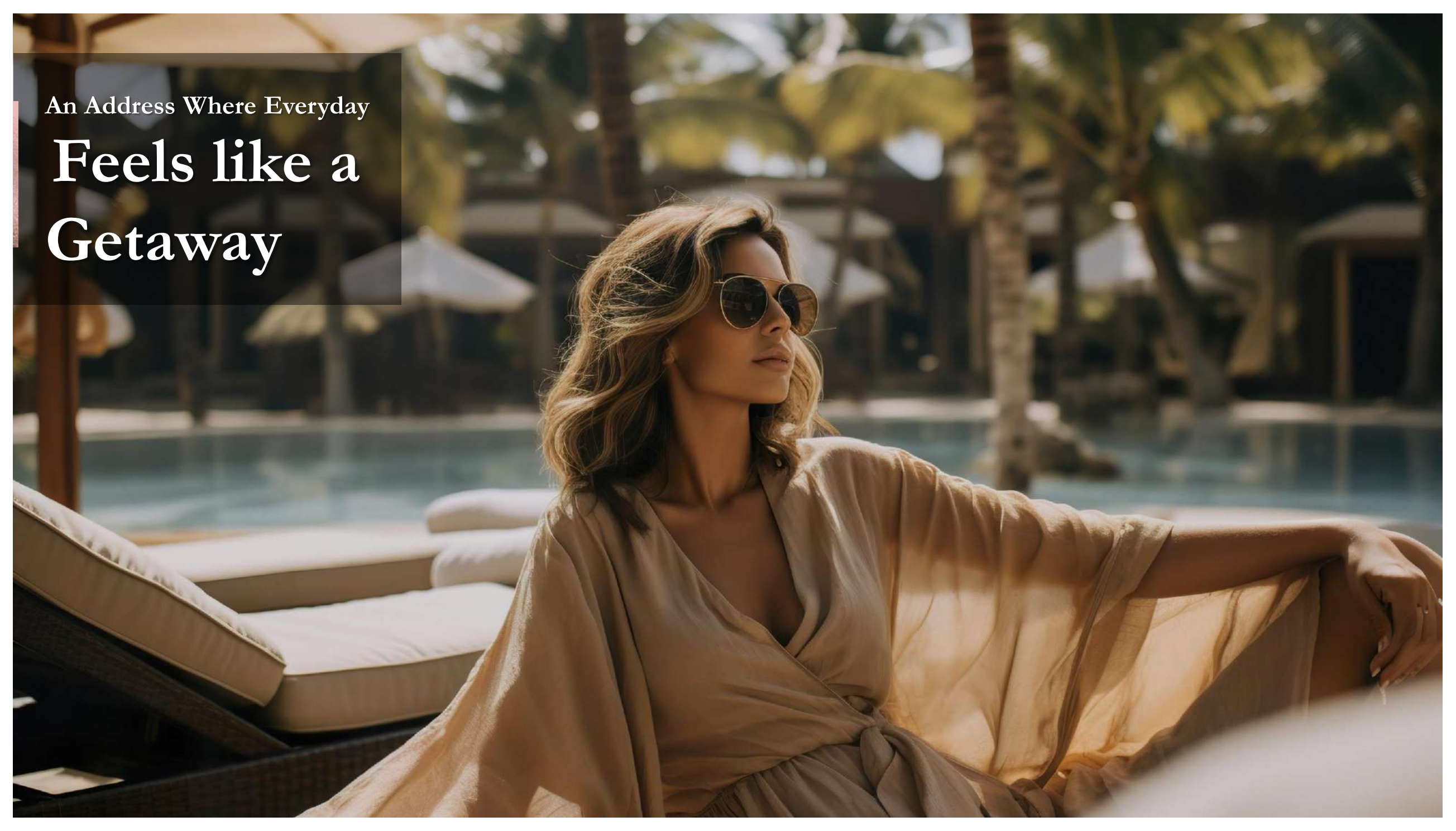


THE
LEGACY
BY SILVERGLADES



An Address Where Everyday

**Feels like a
Getaway**





With Spectacular
Aravalli Views
For a
Peaceful & Inspiring
Natural Retreat



THE
LEGACY
BY SILVERGLADES



An **Address** For
The Distinguished Few










Located on Delhi NCR's
Most Coveted
Address

Seamless access to the **60-meter wide**
road that graces Millionaires' Row

2-minute drive to Golf Course and Golf
Course Extension Road



-  Silverglades Projects
-  Hospital
-  Hotel
-  Malls & Market
-  Landmark
-  Metro Station
-  School

THE LEGACY

An Address That Brings
 THE WORLD TO
 YOUR DOORSTEP



A Masterplan Of
Excellence





Be Captivated by the Majestic Welcome of
Urban Plaza as You Arrive Home



Let the Beautiful Clouds Of
Jacaranda – lined Avenue
Guide You to Your World of Grandeur



CLUB VERVE

The **Unlimited Indulgence** For A Select Few



CLUB VERVE



**Central
Hub**



**Gourmet
Zone**



**Wellness
Zone**



**Sports
Zone**



CLUB VERVE

Central Hub



COFFEE SHOP



PATISSERIE




MEETING LOUNGE


Enjoy A Lifestyle Where Lively Social Interactions Are A Daily Delight.




 Gourmet Indulgence

 Restaurant & Lounge

 Alfresco Deck

 Pop - Up Plaza

 Bar

 Banquet

& Many More..

Embrace Wellness ♠

Swimming Pool



Spa & Sauna



Yoga Deck



State-of-the-art Gym



Amphitheatre



Music Room



Kids Play Area




& Many More..







Ignite Your Passion

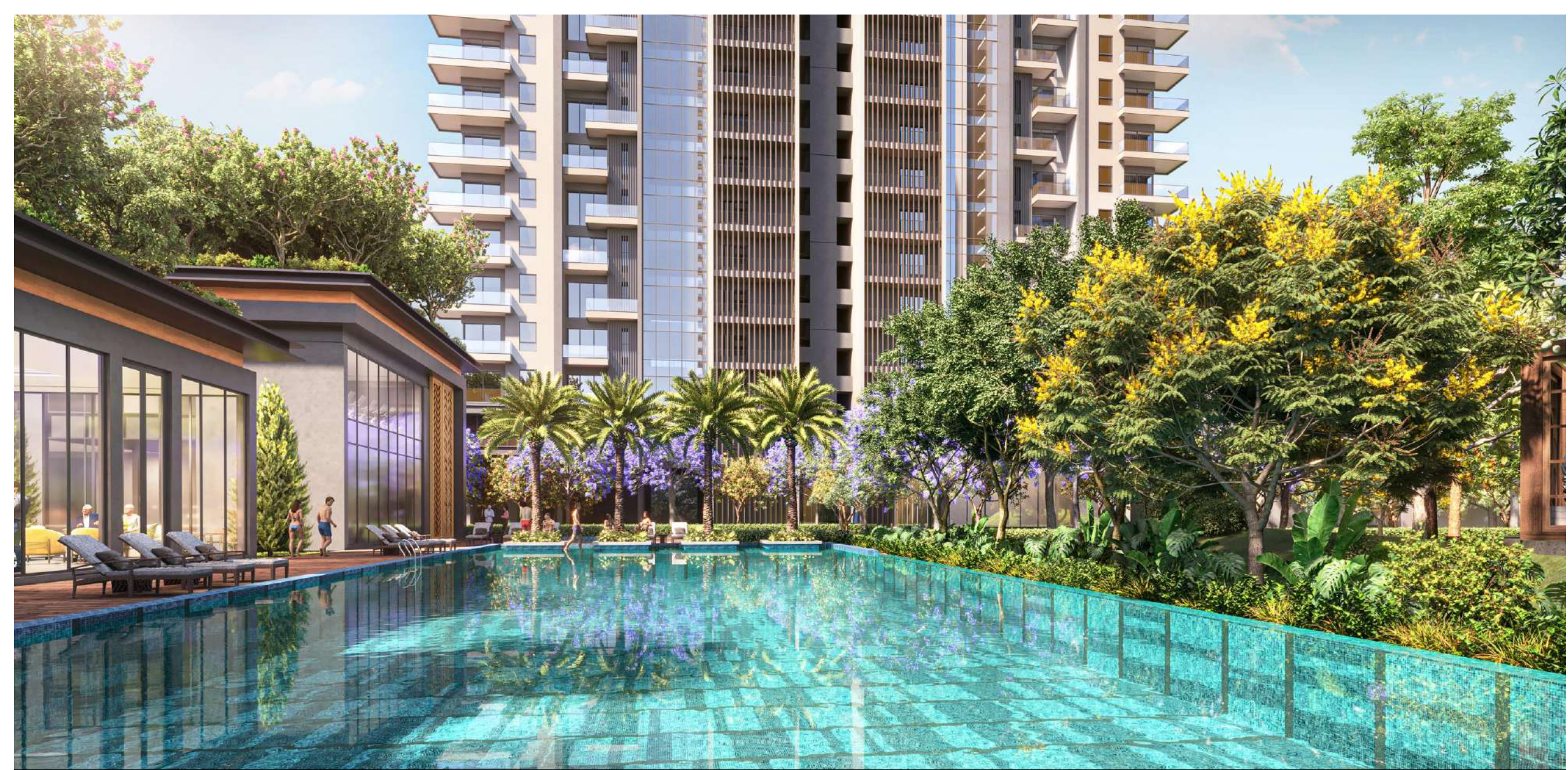
 Cricket Pitch

 Tennis Court

 Badminton Court

 Basketball Court

& Many More..



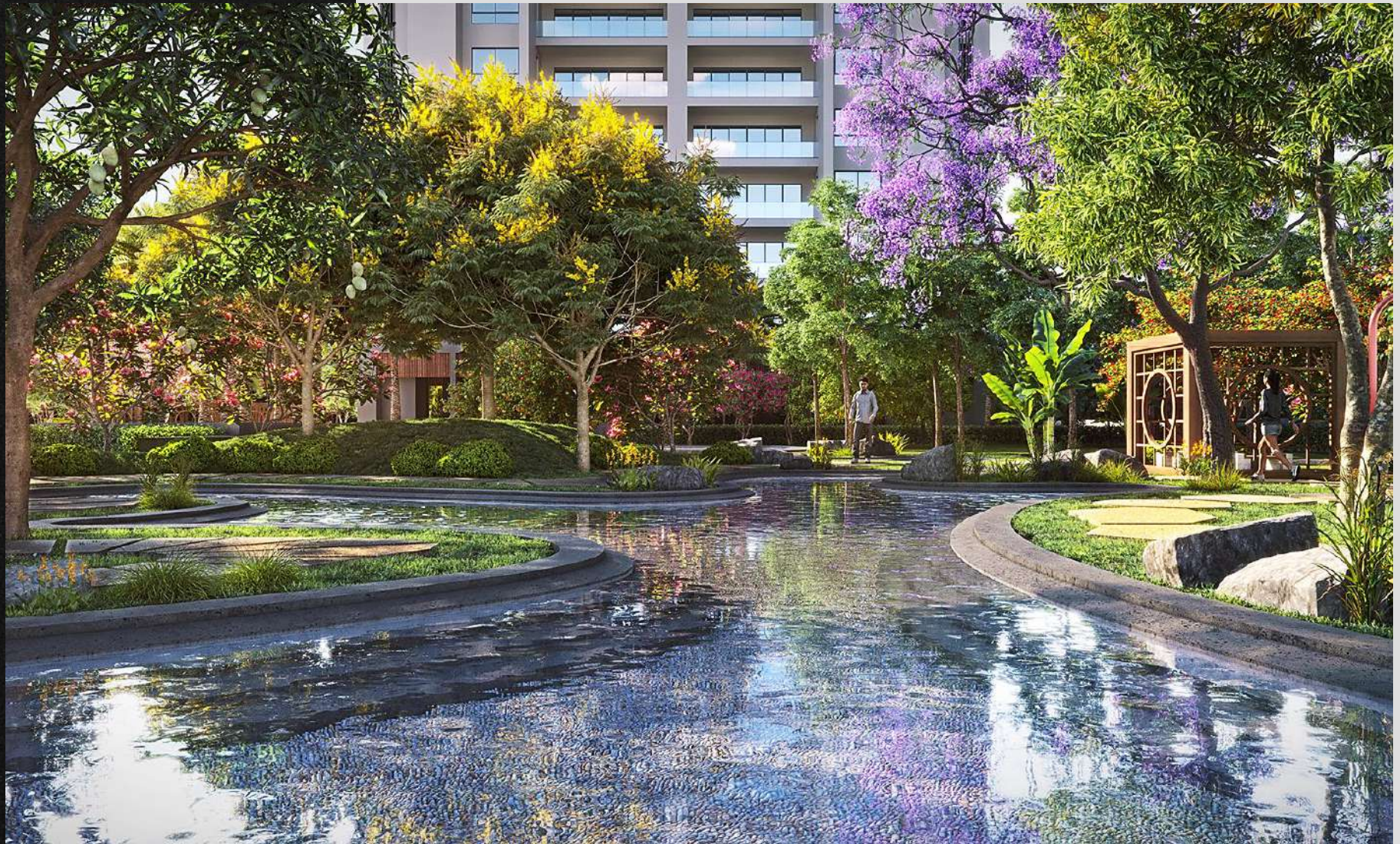
Outdoor **Swimming Pool** For A Refreshing Escape



NATUREWALK

Immerse In Serenity As
Every Moment Gets Enveloped By **Nature's Magic**

Dip Your Toes In &
Let the Serene waters of
Central Lagoon
& Ease Your Mind

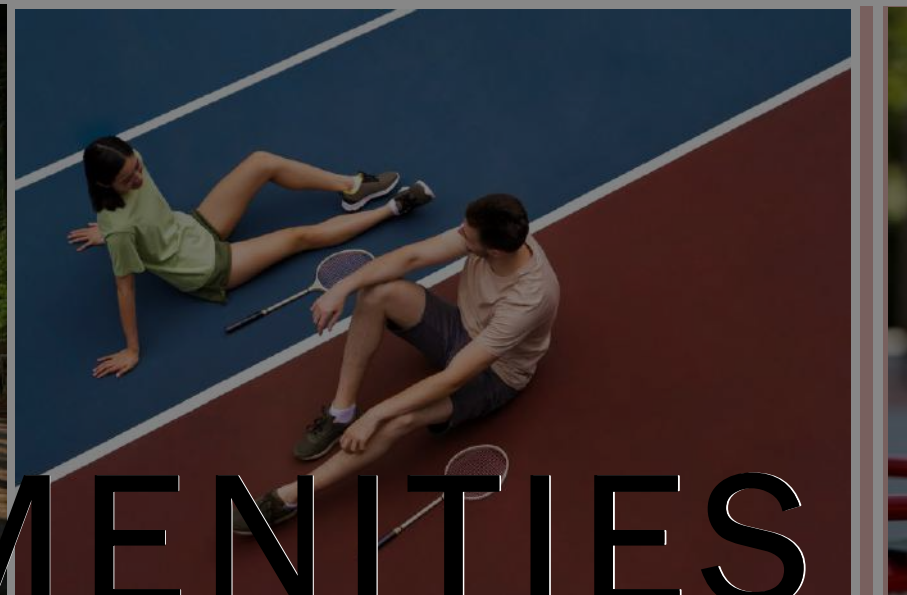
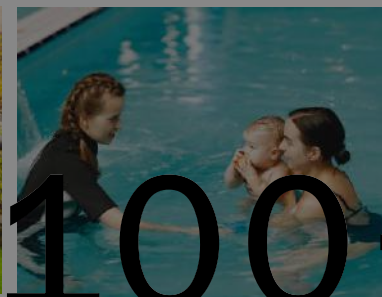
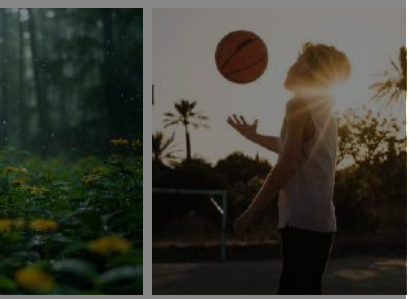
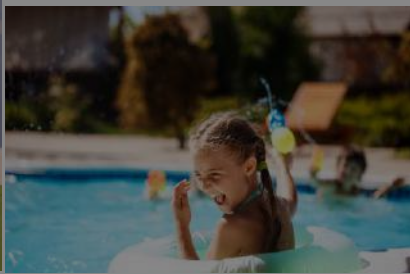
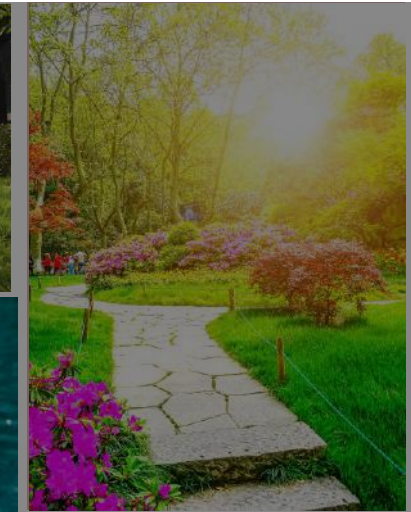


NATUREWALK



NATUREWALK

Escape to Tranquillity with **Pristine Landscape**



100+ AMENITIES



EXCLUSIVE DROP-OFF ZONES

Enter Our **DROP OFF ZONES** for seamless access



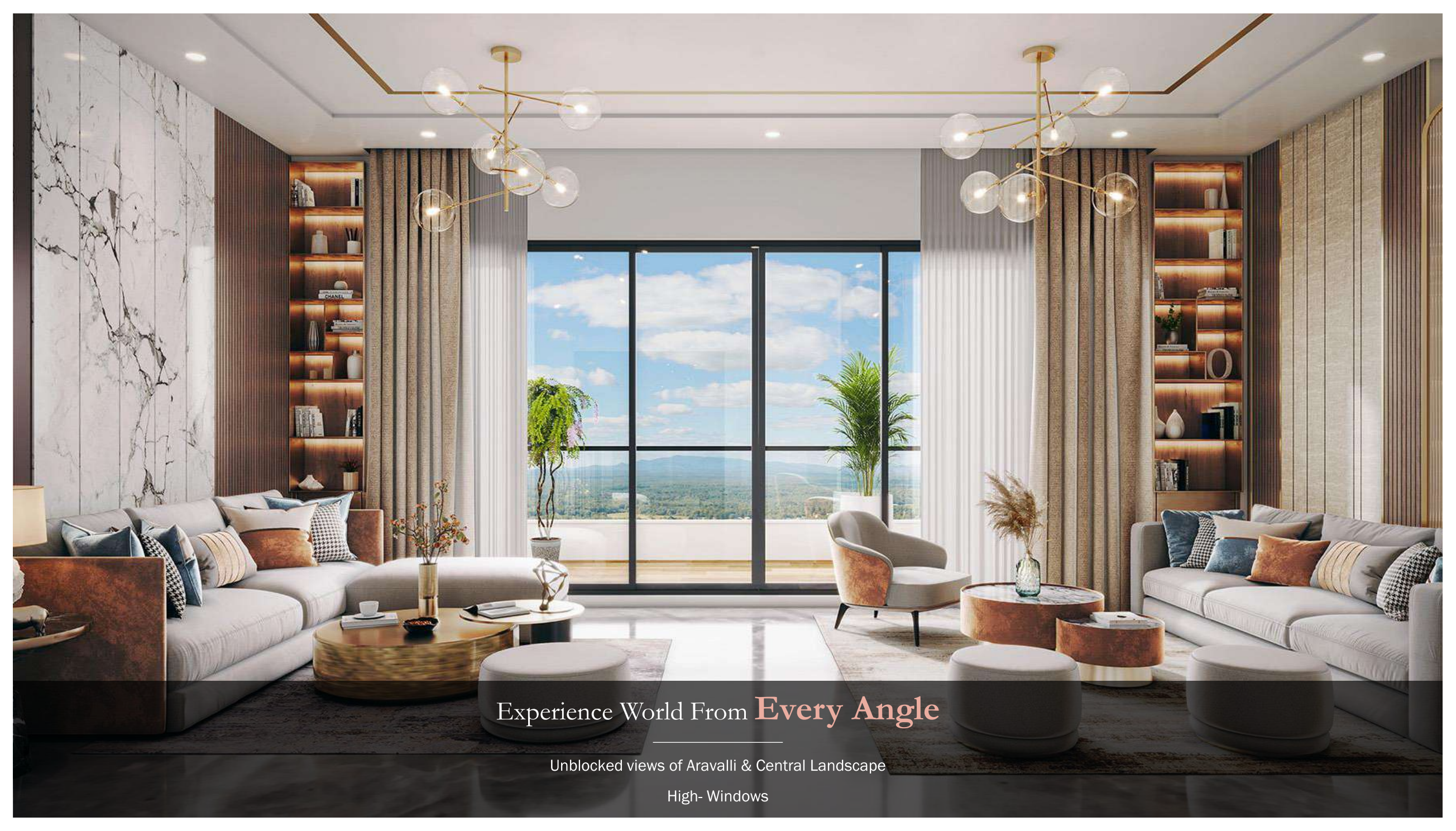
THE
LEGACY

Enter Our **Grand Lobby** & Feel the Warmth Embracing You

Keeping Your Peace At
Paramount, We Ensure Your
Privacy Is Attended To
Perfection

Dedicated Lift and Lobby
for 3 & 4BHK Residences





Experience World From **Every Angle**

Unblocked views of Aravalli & Central Landscape

High- Windows



Curated
Timeless Interiors

A Space that
Promises Joy
Every Moment

Expansive interiors & outdoor decks
Unobstructed Aravalli views

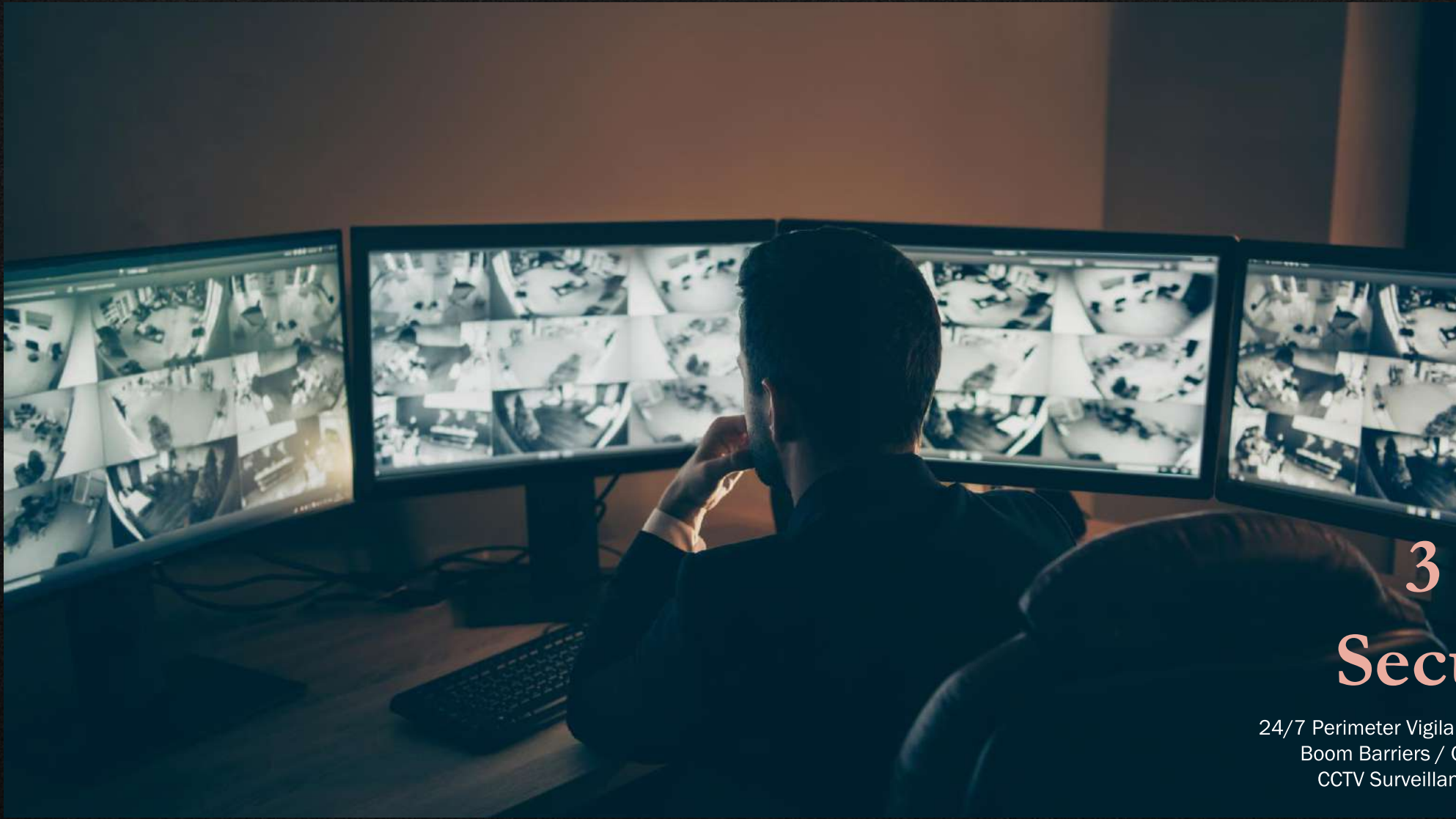




Designed On The Canvas Of
Green Future

Eco-friendly measures & energy-efficient systems

Sustainable living boulevard

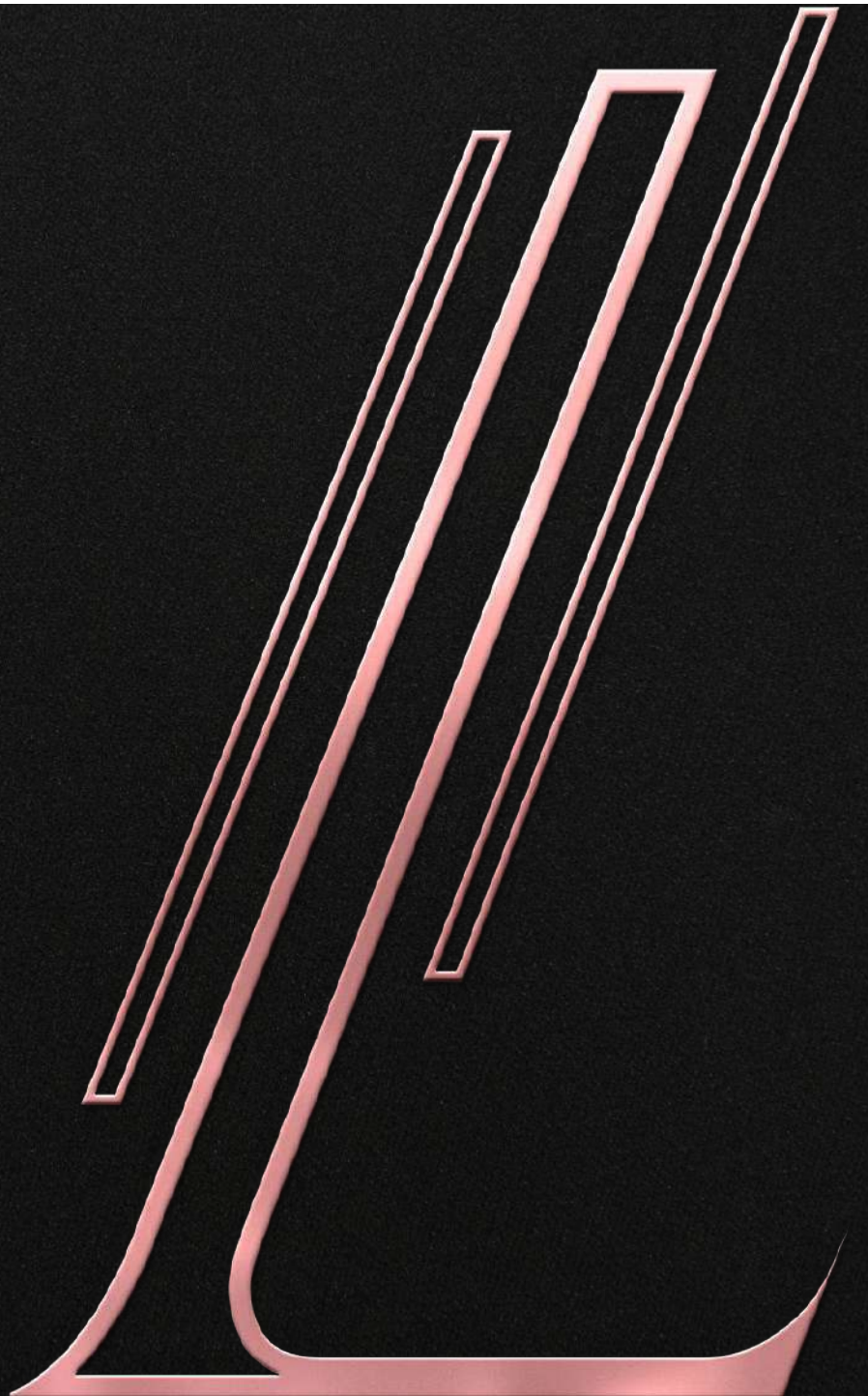


3 Tier Security

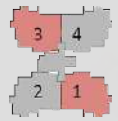
24/7 Perimeter Vigilance & Patrolling
Boom Barriers / Guarded Access
CCTV Surveillance & Recording



F L O O R P L A N S



3BHK
TYPICAL UNIT
 (Tower A)



Carpet Area - 1614 sq.ft./149.9 sq.m.
 Exclusive Area - 2160 sq.ft./201.3 sq.m.
 Super Area - 2800 sq.ft./260.1 sq.m.

*Layout shown represents apartment 1 and 3
 *Apartment 4 and 2 will be the mirror image of 1 and 3

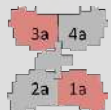
4BHK
TYPICAL UNIT
 (Tower B1/B2)



Carpet Area - 2211 sq.ft./205.4 sq.m.
 Exclusive Area - 2936 sq.ft./273.8 sq.m.
 Super Area - 3800 sq.ft./353.0 sq.m.

*Layout shown represents apartment 2
 *Apartment 1 will be the mirror image of 2

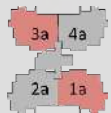
4BHK
PENTHOUSE UNIT
LEVEL 1
 (Tower A)



Carpet Area - 2374 sq.ft./220.5 sq.m.
 Exclusive Area - 3145 sq.ft./293.4 sq.m.
 Super Area - 4200 sq.ft./390.1 sq.m.

*Layout shown represents apartment 1a and 3a
 *Apartment 4a and 2a will be the mirror image of 1a and 3a

**4BHK
PENTHOUSE UNIT
LEVEL 2
(Tower A)**



Carpet Area - 2374 sq.ft./220.5 sq.m.
 Exclusive Area - 3145 sq.ft./293.4 sq.m.
 Super Area - 4200 sq.ft./390.1 sq.m.

*Layout shown represents apartment 1a and 3a
 *Apartment 4a and 2a will be the mirror image of 1a and 3a

5BHK
PENTHOUSE
UNIT
LEVEL 1
(Tower B1/B2)



Carpet Area - 3300 sq.ft./309.3 sq.m.
 Exclusive Area - 4445 sq.ft./414.9 sq.m.
 Super Area - 5900 sq.ft./548.1 sq.m.

*Layout shown represents apartment 1a and 2a
 *Apartment 1a will be the mirror image of 1a and 2a

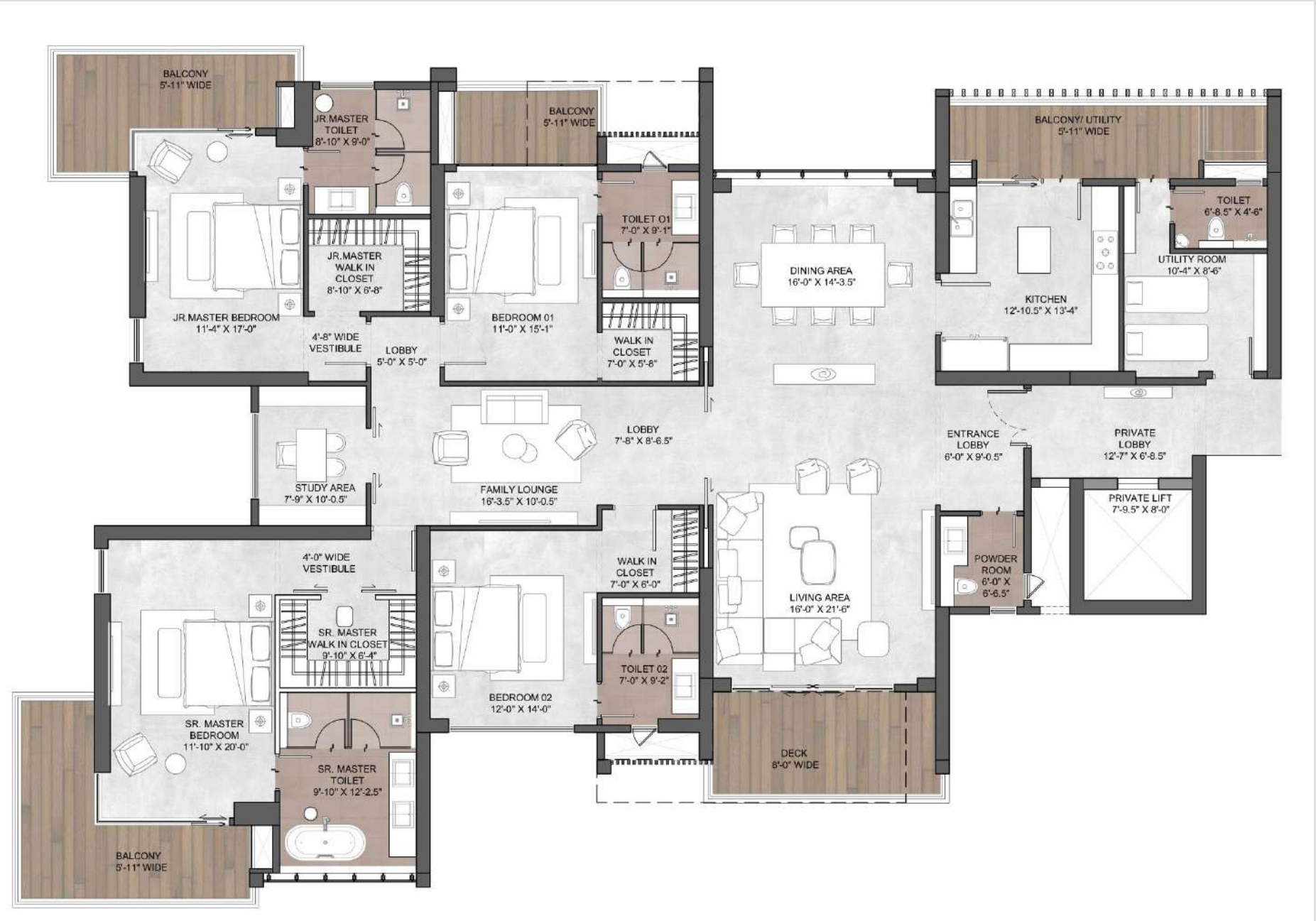
**5BHK
PENTHOUSE
UNIT
LEVEL 2
(Tower B1/B2)**



Carpet Area - 3300 sq.ft./309.3 sq.m.
 Exclusive Area - 4445 sq.ft./414.9 sq.m.
 Super Area - 5900 sq.ft./548.1 sq.m.

*Layout shown represents apartment 1a and 2a
 *Apartment 1a will be the mirror image of 1a and 2a

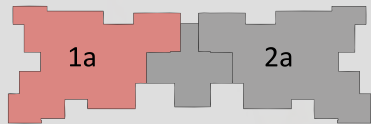
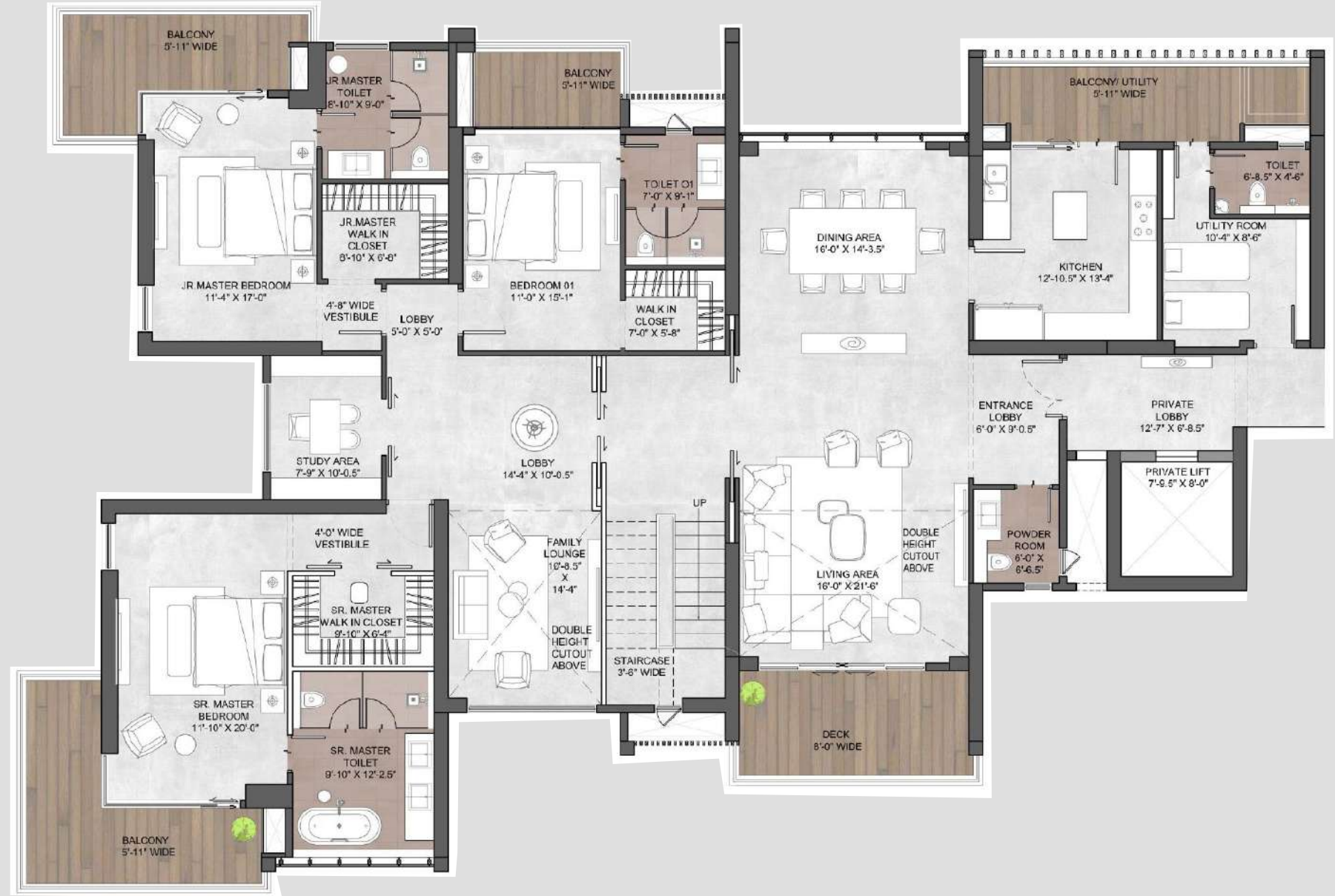
4BHK + S TYPICAL UNIT (Tower C1)



Carpet Area - 2810 sq.ft./260 sq.m.
 Exclusive Area - 3686 sq.ft./ 343 sq.m.
 Super Area - 4800 sq.ft./ 445 sq.m.

- Layout shown represents Apartment 1
- Apartment 2 will be the mirror image of 1

5BHK + S
PENTHOUSE
LEVEL 1
(Tower C1)



- CARPET AREA – 4164 sq.ft./386.834 sq.m
- EXCLUSIVE AREA – 5820 sq.ft. /542.392 sq.m
- SUPER AREA – 7700 sq.ft. /715.347 sq.m.

- Layout shown represents Apartment 1a
- Apartment 2a will be the mirror image of 1a

5BHK + S
PENTHOUSE
LEVEL 2
(Tower C1)





OWN YOUR LEGACY TODAY

Disclaimer: "The Legacy" is a residential group housing colony being developed by Silverglades Homes LLP (LLPIN: ABZ-9999), having its registered office at 506, 5th Floor, Time Square Building, B Block, Sushant Lok - 1, Gurugram-122002. The Legacy is being developed in two phases, Phase I is being developed on 9.950 acres ~ 40266.22sqm of land (part of total project area of 10.4625 acres ~42340sqm), under License No. 215 of 2023 granted by the Department of Town and Country Planning, Haryana, located in Sector-63A, Gurugram, Haryana. The Legacy - Phase I has received RERA Registration No. 88 of 2024, vide RERA Certificate No.RC/REP/HARERA/GG/861/593/2024/88 dated 16.08.2024. This phase will consist of Tower A, B1, B2, and C1, which will include 341 residential apartments, along with a club / community centre and shopping centre, as per building plans approved by DTCP vide Memo No. ZP-1917/PA(DK)2024/20315 dated 05/07/2024. All approvals are available for viewing at our office during office hours on working days. Facilities, layouts, specifications, renderings, and information contained herein are indicative and subject to change without prior notice.